

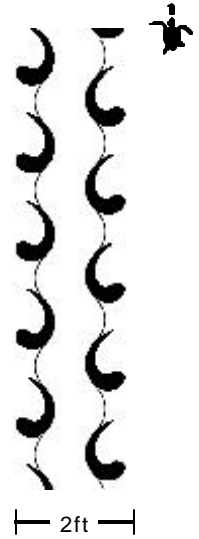


Figure 1. Characteristics of sea turtle tracks found on Florida beaches.

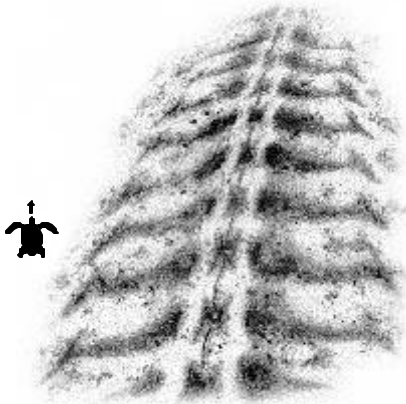
### LOGGERHEAD



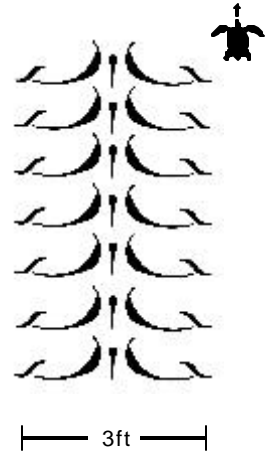
- A. Alternating comma-shaped flipper marks
- B. Wavy and smoothed track center with no thin, straight, and well-defined tail-drag mark
- C. No regular marking from front flippers at the margins of the track



### GREENTURTLETRACK



- A. Parallel flipper marks as from a "butterfly-stroke" crawling pattern
- B. Ridged track center with a thin, straight, and well-defined tail-drag mark that is punctuated by tail-point marks
- C. Regular marking from front flippers at the margins of the track



### LEATHERBACK



- A. Parallel flipper marks as from a "butterfly-stroke" crawling pattern
- B. Ridged track center with a thin, straight, and well-defined tail-drag mark that is punctuated by tail-point marks
- C. Extensive marking from front flippers at the margins of the track And extending the total track width to 5 - 6 feet or greater

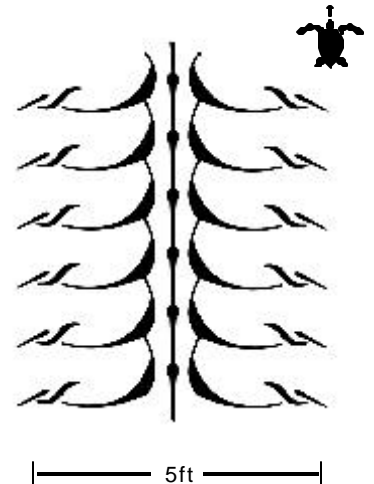
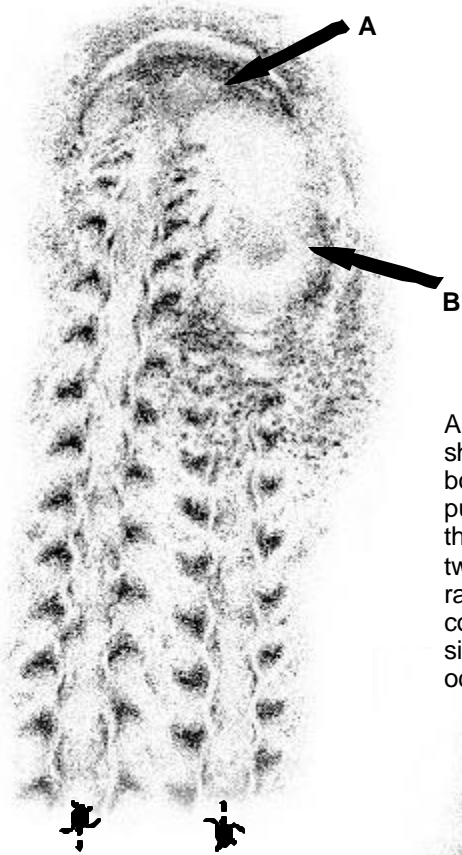
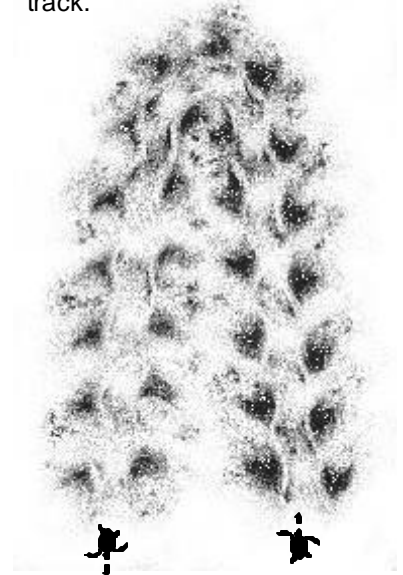


Figure 2. Characteristics of **loggerhead crawls** indicating either that the turtle had previously nested (left a nest) or had abandoned its nesting attempt (left a “false crawl”).

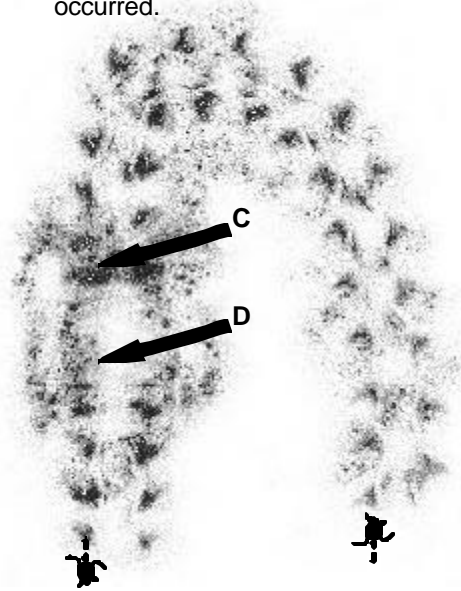
A **loggerhead nest site** showing a secondary body pit ( **A** ) and a mound of thrown sand ( **B** ) that is wider than the track.



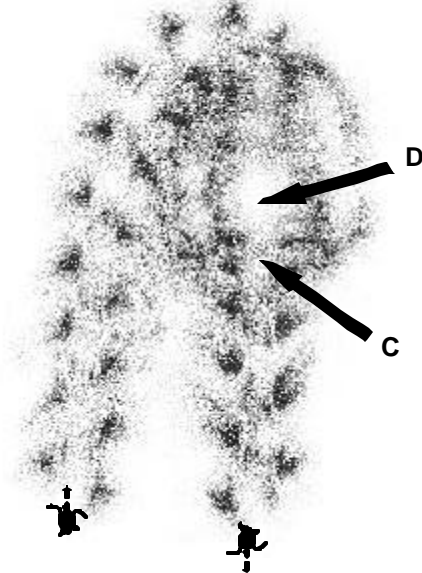
A **loggerhead false crawl** showing no evidence of disturbed sand other than the track.



A **loggerhead false crawl** showing an abandoned primary body pit ( **C** ) and a mound of pushed sand ( **D** ) no wider than the track and lying between two conspicuous ridges. As is rarely found in nests, a track continues up the beach from the site where the turtle's last digging occurred.



A **loggerhead false crawl** showing a small abandoned primary body pit ( **C** ) and a mound of pushed sand ( **D** ) no wider than the track and lying between two conspicuous ridges.



A **loggerhead false crawl** showing a primary body pit with an abandoned egg cavity ( **E** ).

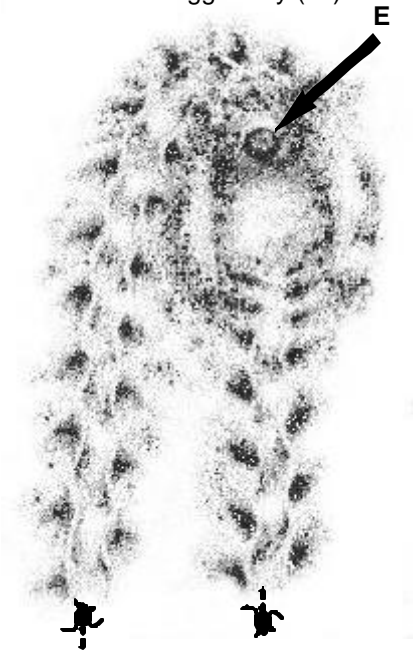
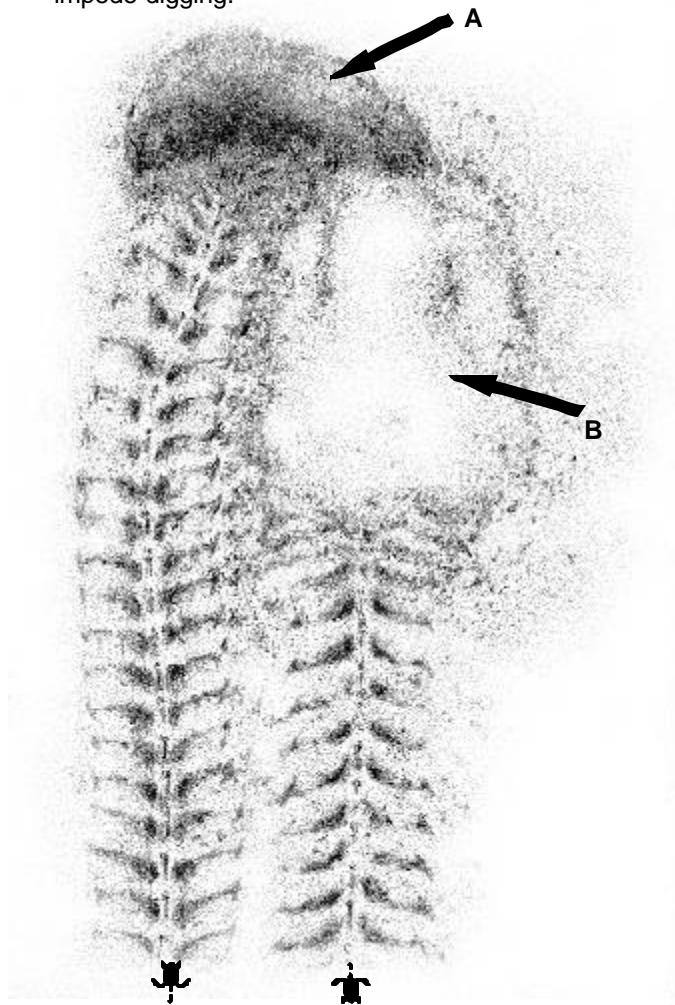


Figure 3. Characteristics of **green turtle crawls** indicating either that the turtle had previously nested (left a nest) or had abandoned its nesting attempt (left a “false crawl”).

A **green turtle nest** site on an open beach showing a secondary body pit (**A**) and a mound of thrown sand (**B**) that is greater than twice as long as the visible secondary body pit. Note that smaller nest mounds are expected when obstacles or vegetation impede digging.



A **green turtle false crawl** on an open beach showing an abandoned primary body pit (**C**) and a mound of thrown sand (**D**) that is smaller than twice as long as the visible primary body pit. Note that many green turtle nests may have body pits and nest mounds that look similar to this.

